



# Venue Technical Specification

Version: June 2023

Director  
James Donaldson  
james@ncma.nz  
(03) 548 9477  
029 7711 007

Venues Manager  
Kim McCormick  
venues@ncma.nz  
(03) 548 9477  
021 276 6731

Venue Technical Manager  
JR Richardson  
tech@ncma.nz  
027 461 6458

[www.ncma.nz](http://www.ncma.nz)

Proudly Compiled by



## Venues Overview

### **Spaces**

The Nelson Centre of Musical Arts consists of two large spaces, the Nelson School Of Music Auditorium and Pastorius Waller Recital Theatre, which are suitable for performance or rehearsals. These are complimented by several greenrooms, classrooms, teaching studios, a foyer with bar, and other facilities.

### **Technical Systems, Facility Booking and Sharing**

The Nelson School of Music auditorium and Pastorius Waller Recital Theatre are equipped with some technical facilities that are dedicated to each space and included in the hire. Other facilities are either shared between all users or bookable.

Technical Systems are provided to the hirer in a standard configuration and when alterations are made, must be reinstated to this configuration during your pack-out unless agreed otherwise.

Additional equipment and services can also be provided by our technical partner, VenueTech.

### **Safe Working Practices**

The Nelson School of music is an ETNZ member and subscribes to the practices outlined in the most recent version of the 'Guide to Safe Working Practices In The Theatre And Entertainment Industry, New Zealand'.

### **Electrical Safety**

All electrical devices must comply with AS/NZS 3760:2010, be free of faults, and (excluding personal electronics chargers) display a current Portable Appliance Test (PAT) tag.

### **Fire Safety**

Soft-goods (Drapery, cloths etc) or any other large flammable materials must be suitably fire retarded to meet AS 1530 Part 2 building standard.

### **Rigging & Safety**

Lifting or rigging equipment must be currently certified and comply with the relevant standards as outlined in the Health and Safety in Employment Act 1992.

# Nelson School Of Music Auditorium

## Stage and Auditorium

### Stage Dimensions

<b>Basic Stage Dimensions</b>	12.5m wide, 4.5m deep with 5 tiered rows of choir stalls
<b>Stage Surface</b>	Tongue and groove Matai
<b>Stage height</b>	1.2m from auditorium floor
<b>Load capacity</b>	max 550kg per square metre

The use of screws, nails or other methods of fixing items to the floor or walls is not allowed.

### Auditorium floor

<b>Audience Capacity</b>	291 fixed seats & 3 wheelchair spaces +4 seats at the rear of the auditorium if the technical position is removed
--------------------------	--

<b>Load capacity</b>	max 550kg per square metre
----------------------	----------------------------

The auditorium floor is mostly flat with a gentle rake beginning 9m from stage.

### Stage Access

<b>Stage left door</b>	1m wide, with 1m wide corridor
<b>Stage right door</b>	2m wide with a large offstage wing-space
<b>Staircase from auditorium</b>	1.2m wide with 1 handrail, movable

<b>Piano</b>	Steinway Model D Grand piano. 8' 11¼" (274cm). Tuned on request
<b>Chairs &amp; Music Stands</b>	40x black chairs & 25 music stands

### Operating Positions

Technical systems are operable from the standard operator or stage managers positions.

- The stage managers position (located offstage left) is suitable for events that have basic lighting or sound requirements i.e lights up/down and an announcement mic.
- The standard operating position is located at the rear of the auditorium, providing 2m of width.  
Removal of Seats R 5-8 increases the operating position to 4m, provided they are removed from sale.

### House Lights

On a independent dimming system, operated by control panels at both operating positions.

### Venue Blackout

Curtains are installed to stop external light spill, but do not achieve a complete blackout.

### Comms

3x single ear headset & packs . Outlets for comms are located throughout the facility.

### Stage Monitoring

A live video feed from the rear of auditorium is distributed to greenrooms, wings & front of house.

# Audio Systems

## Nelson School Of Music Auditorium

### Overview

Our speaker system has been specified to suit the unique live acoustic of our main auditorium. Capable of producing an undistorted 95dBA through the auditorium (+/- 6dB) with 12dB of headroom, it is perfect for any event or live amplified concert style that would work within the naturally live acoustic. Room modelling data is available on request. We are so confident in the quality of our sound system that we do not allow users to bring in their own for events. If you believe our system is not sufficient for your performance, it is almost certain that the acoustic properties of this space will deem our venue unsuitable for your event.

### Main speakers

Permanently installed, wall-mounted Fohhn LX-220 full range line source speakers.

Amp: Fohhn D-2.1-5000 Digital 2-channel DSP amplifier, class D, 2x 1500 W.

**Subwoofers** (employed as required for amplified concerts).

2x Fohhn XS-30 Subs with Fohhn D-2.1-5000 Digital 2-channel DSP amplifier, class D, 2x 1500 W.

### FOH Inputs

The FOH system can be fed from either operating position - rear of auditorium or stage managers position.

### House mixer & Inputs

DBX Go-rack. 2x mic inputs and stereo input mixer.

Larger audio consoles and extra sound production equipment can be sourced on request.

2x G3 Sennheiser radio mics with either lapel, headset or handheld transmitters.

### Audio way-lines

Audio way-lines in the main auditorium are installed for 3 discrete purposes.

#### Amplified concert production - Operating from the rear of auditorium

Operating position <-> Upstage centre	Main send and returns	24x8 XLR
Operating position -> FOH input	L+R console outs	2 XLR
Upstage C <-> Downstage C	Tie lines to downstage	8x4 XLR
Upstage C <-> Downstage C	Tie lines to downstage	4 NL4 Speakon

#### Announcements or limited inputs - Operating from the stage manager position.

Upstage C -> Stage Managers position	Inputs from onstage	4 XLR
Stage Managers position -> FOH input	L+R console outs	2 XLR

#### Live recording of acoustic concerts - Utilising the piano-store as a control room.

Upstage C -> Control room	8 XLR
Flown mic bar -> Control room	4 XLR

### Sound Power

Dedicated technical earth circuits for audio use are located throughout the facility.



# Rigging Systems

Nelson School Of Music Auditorium

## Rigging Points

Truss	SWL	To DS	Installed	Circuits	Trim height
T1 / FOH 2	2x 500kg	5.2m	7m, 300mm Tri truss	2x hot-power, 1 DMX, 1 Cat6	6m to stage
T2 / FOH 1	2x 500kg	0.8m	10m, 300m Tri-truss	20 Way-lines, 1 DMX, 1 Cat6e	6m to stage
T3 / U.S	2x 500kg	-4.1m	10m, 300m Tri-truss	20 Way-lines, 1 DMX, 1 Cat6e	6m to stage
T4 / Organ	2x 500kg	-9.3m	10m, 300m Tri-truss	6x Way-lines, 1 DMX, 1 Cat6e	3.6m to top stall

### Control

8ch CP Solutions motor controller + pickle.

Installed motor control cables that terminate at each rigging point.

### Motors

8x Lodestar 500kg D8+ Hoists

# Lighting Systems

Nelson School Of Music Auditorium

### Control

Novalink 36 TheatrelightNZ DMX console

26 Faders, 4 banks of 12 scene memories.

### Dimmers

48 channels of DMX controlled TheatrelightNZ PID II Rack

### DMX Distribution

8way DMX splitter.

5pin DMX way-line outlets located throughout facility

2 DMX way-lines inputs from the operating position to splitter

1 DMX way-line input from stage manager position to splitter

### Way-lines + Patching

120x 10A way-lines, IEC based patch bay

1- 20	Truss # 1 / FOH 2	Weiland outlets in ceiling
21-40	Truss # 2 / FOH 1	Looms installed
41-60	Truss # 3 / Upstage	Looms installed
61-80	Truss # 4 / Organ	Weiland outlets in ceiling
81-86	Operating position	Standard 10A outlets
87-92	Downstage right cupboard	Standard 10A outlets
93-96	Downstage centre hatch	Standard 10A outlets
97-102	Downstage right cupboard	Standard 10A outlets
103-108	Upstage centre	Standard 10A outlets
109-114	Top of choir stalls, stage right	Standard 10A outlets
115-120	Top of choir stalls, stage left	Standard 10A outlets

### Lighting Hot-power

6x dedicated switched 10A circuits at patch-bay.

## Lighting design

Tungsten front light from FOH 2.  
LED front, top and backline from FOH1, US and Organ trusses.  
Coloured LED on Pipe organ.

While all LED fixtures are full-colour capable, we are limited with the current lighting desk to open white front and coloured backlights - with individual control of intensity, but colour control paired.

## Lamp Stock

20x Chauvet Ovation F-915 FC RGBAL fresnels  
6x 2kW Fresnels  
4x ShowPro QUAD18 RGBW Pars

## Height Access

1x Haulotte Quick-Up, 11 m working height  
Shared with Pastorius Waller Recital Theatre

Additional fixtures or other lighting production equipment can be sourced on request.  
Electrical devices may be subject to inspection, and must display a current test tag

## Power

### Nelson School Of Music Auditorium

#### 10Amp General Power

Outlets are located throughout the facility for general use.

#### 10Amp Technical Earth

Audio specific outlets are located throughout the facility

#### 40Amp 3 Phase

2x Dimmer room  
1x Rear of auditorium operating position  
1x Downstage right speaker cupboard  
1 x Downstage left speaker cupboard  
1x Auditorium ceiling space

#### 63Amp 3phase

1x Downstage right speaker cupboard

## Data Systems

### Nelson School Of Music Auditorium

#### Shielded Cat 6a, 10Gigabit

Terminals are located throughout the facility.  
A patch bay allows any two terminals to be interconnected.

# Pastorius Waller Recital Theatre

## Room Overview

A flexible general space for large ensemble rehearsals, recording or performances.

Basic technical infrastructure exists for performances although it is expected most of this will be brought in to suit specific requirements. This space is best suited to an end-on configuration with the stage against the north wall, although can be configured to suit your needs.

<b>Room Dimensions</b>	10m x 13m
<b>Floor Surface</b>	Flat carpet tile over concrete
<b>Stage</b>	None

The use of screws, nails or other methods of fixing items to the floor or walls is not allowed.

### Piano

Yamaha C7 Grand piano. Tuned on request.

### Chairs and Music Stands

80x black chairs for audience.

20 black chairs for performers.

No dedicated music stands at this stage.

### Operating Positions

Technical systems are best operated from the south wall as sound, DMX and data way-lines and house lighting control all terminate in that position. However it would be possible to extend or re-route some of these to other positions in the room.

### House Lights

On a independent dimming system, operated by control panels at the main doors and south wall.

### Venue Blackout

A large window along the east wall provides wonderful natural light.

Blackout is possible with the installation of push-up drapes.

### Comms

Comms outlets are located throughout the facility, however no headsets are allocated to the Pastorius Waller Recital Theatre at present.

## Audio Systems

### Pastorius Waller Recital Theatre

There is no included PA in the Pastorius Waller Recital Theatre at this time.

Please talk to us as we can source quality audio equipment suitable to your specific needs.

#### Audio way-lines

South Wall (Ops) <-> North wall ('Stage')	Main send and returns	16x8 XLR
South Wall <-> Adjoining control room	Main send and returns	16x8 XLR
Control Room <-> Adjoining studio	Main sends and returns	16x8 XLR

#### Sound Power

Dedicated technical earth circuits for audio use are located throughout the room.

Electrical devices may be subject to inspection, and must display a current test tag

## Rigging Systems

### Pastorius Waller Recital Theatre

#### Lighting Bars

4 internally wired lighting bars offer overhead rigging and patching for lighting or other technical equipment.

Lighting bar	SWL	Circuits	To North Wall	Height
LX 1 (South)	500kg*	8x Way-lines, 1 DMX, 1 Cat6e	7.6m	4.7m to the underside
LX 2	500kg*	8x Way-lines, 1 DMX, 1 Cat6e	5.9m	4.7m to the underside
LX 3	500kg*	8x Way-lines, 1 DMX, 1 Cat6e	3.4m	4.7m to the underside
LX 4 (North)	500kg*	8x Way-lines, 1 DMX, 1 Cat6e	1m	4.7m to the underside

\*Subject to final certificate

Additional rigging used must have been load tested and certified in the past 12months

## Lighting Systems

### Pastorius Waller Recital Theatre

While do not have a complete lighting system at this time, please talk to us about your requirements as we can source lighting equipment suitable to your specific needs.

**Lighting Fixtures**                      None

**Control**                                      None

<b>Dimmers</b>	2x 12channel TheatrelightNZ DMX dimmer packs												
<b>DMX Distribution</b>	5pin DMX way-line outlets located throughout 1 DMX way-line to tie lines. No splitter installed at present.												
<b>Way-lines + Patching</b>	48x 10A way-lines, IEC based patch bay <table> <tr> <td>1- 8</td><td>Lighting bar # 1 (North)</td></tr> <tr> <td>9-16</td><td>Lighting bar # 2</td></tr> <tr> <td>17-24</td><td>Lighting bar # 3</td></tr> <tr> <td>25-32</td><td>Lighting bar # 4 (South)</td></tr> <tr> <td>33-34</td><td>West corner of north wall</td></tr> <tr> <td>35-36</td><td>East corner of north wall</td></tr> </table>	1- 8	Lighting bar # 1 (North)	9-16	Lighting bar # 2	17-24	Lighting bar # 3	25-32	Lighting bar # 4 (South)	33-34	West corner of north wall	35-36	East corner of north wall
1- 8	Lighting bar # 1 (North)												
9-16	Lighting bar # 2												
17-24	Lighting bar # 3												
25-32	Lighting bar # 4 (South)												
33-34	West corner of north wall												
35-36	East corner of north wall												
<b>Lighting Hot-power</b>	2x Dedicated 10A circuits at patch-bay.												
<b>Height Access</b>	1x Haulotte Quick-Up, 11 m working height Shared with Main Auditorium												

Additional fixtures or other lighting production equipment can sourced on request.  
A Electrical devices may be subject to inspection, and must display a current test tag.

## Power

### Pastorius Waller Recital Theatre

<b>10Amp General Power</b>	Outlets are located throughout the room for general use.
<b>10Amp Technical Earth</b>	Audio-specific outlets are located throughout the room
<b>40Amp 3 Phase</b>	2x Dimmer cabinet (In use by house dimmer packs)

## Data Systems

### Pastorius Waller Recital Theatre

<b>Shielded Cat 6a, 10Gigabit</b>	Terminals are located throughout the facility. A patch bay allows any two terminals to be interconnected.
-----------------------------------	--

# Green Rooms & Rehearsal Studios

## Green Rooms / Dressing Rooms

2 Greenrooms are located in the backstage area in close proximity to the primary auditorium stage door and Pastorius Waller Recital Theatre.

### **Dimensions**

4m x 3m. Suitable for up to 4 people comfortably

### **Facilities**

Make-up bench and mirror with lighting

Private toilet, shower and hand basin

Upright piano

Couches

Live video monitor from the Nelson School Of Music Auditorium

Heat pump

## Large Studio

A single large rehearsal studio is located on the west side of the Pastorius Waller Recital Theatre.

### **Dimensions**

6.4m x 3.2m. Suitable for up to 15 people

Piano

Yamaha U3 Upright

## Small Rehearsal Studios

Numerous rehearsal studios are located throughout the facility.

Each room contains a whiteboard, seating and a small desk.

### Kidson Building

Rehearsal Studio #1      4m x 3.4m      2x Pianos

Rehearsal Studio #2      4m x 3.3m

Rehearsal Studio #3      5.1m x 3.3m      2x Pianos

Rehearsal Studio #4      5.1m x 3.4m

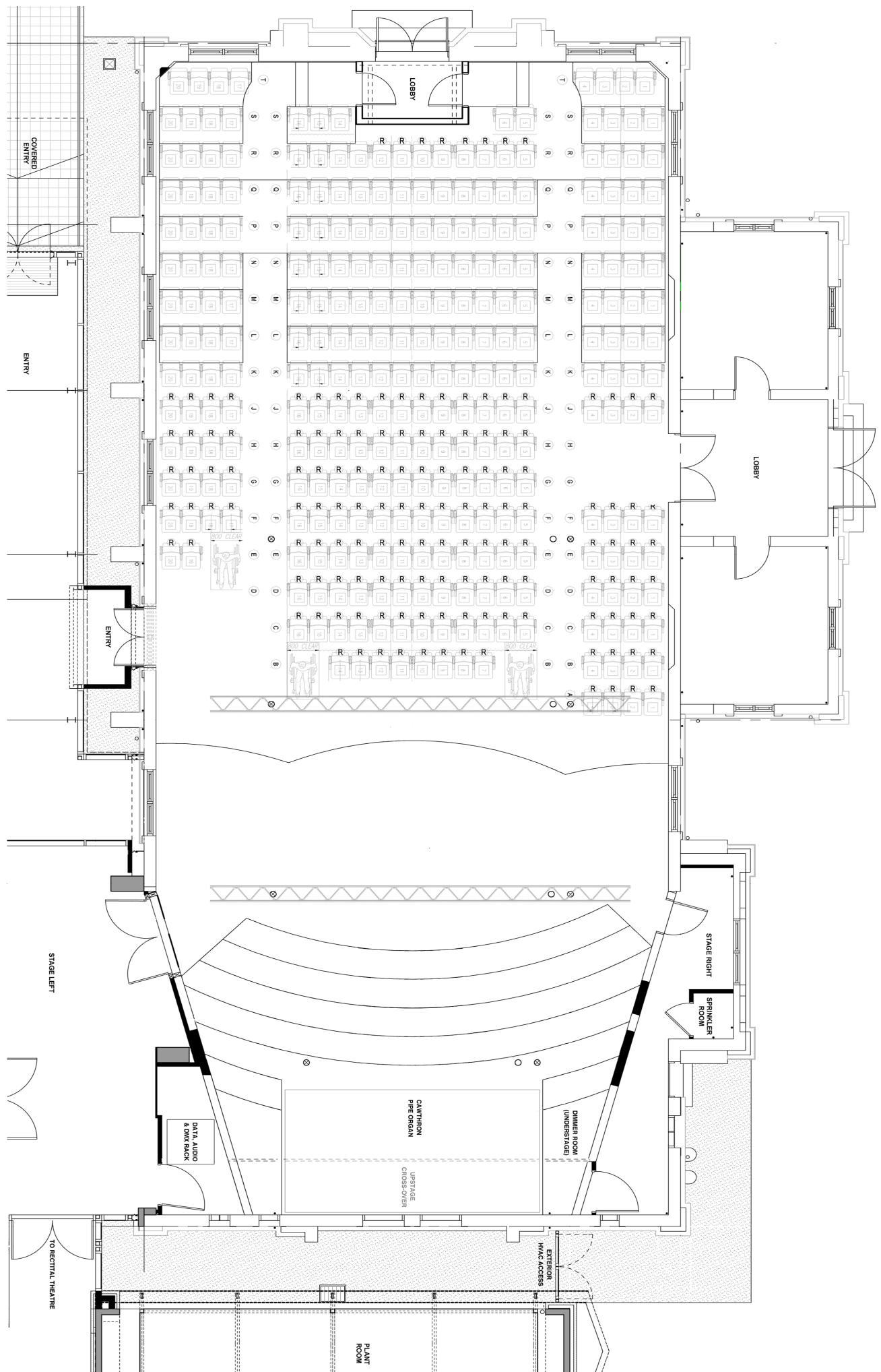
### Collingwood St Wing

Rehearsal Studio #5      4m x 3.5m

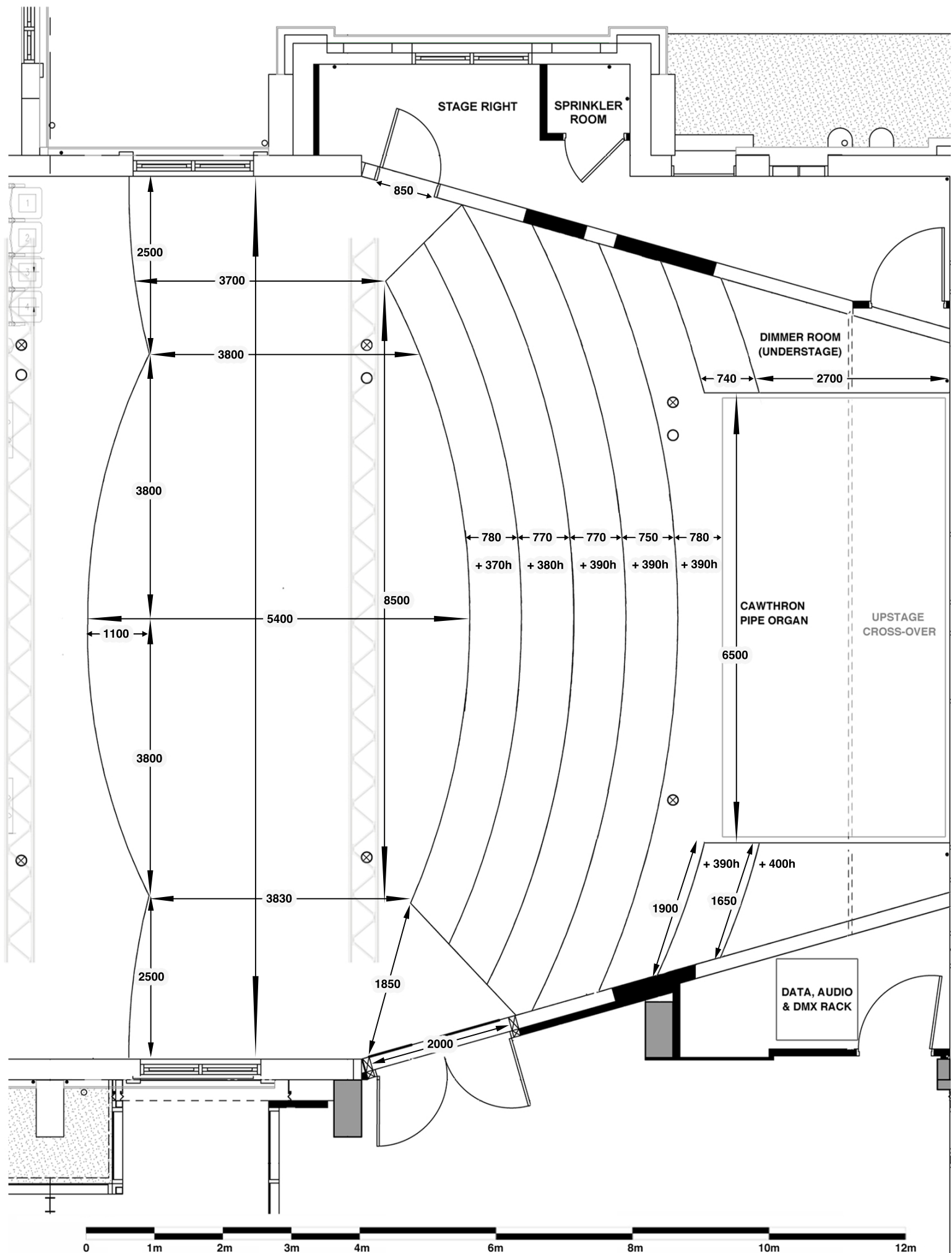
Rehearsal Studio #6      4m x 3.5m

## Other Facilities

Toilets	4x Male public toilets in the foyer 4x Female public toilets in the foyer 1x Gender neutral toilet near Pastorius Waller Recital Theatre
Wheelchair Facilities	Wheelchair access through the front door Lift between foyer/auditorium and stage/recital theatre levels 1x Wheelchair accessible gender neutral toilet near Recital Theatre 1x Wheelchair accessible gender neutral in Foyer
Kitchenette	Small shared facilities available for use.
Staging	6x Staging decks 1m x 2m 100mm high w/ 300 & 600 legs, skirts and toe-kicks Custom legs to allow for placement on Auditorium choir stalls.
Drapery	24m of 4m high push-up drapery system.
Internet	Guest wifi available throughout the facility. Cabled internet available on request.
Blue Lights	Throughout areas adjoining to the auditorium stage.
Air-conditioning	Programmable BMS systems in the auditorium and recital theatre. Heat-pumps/air conditioners are located in most other areas.
Fire Safety	Heat activated sprinkler systems, and integrated fire alarm. Call points are located throughout the building.
Smoke/Particle Alarm	Particle sensors. Auditorium isolation possible with a fire warden.
Piano Tuning	Piano tuning is available on request and at the cost of the venue hirer.







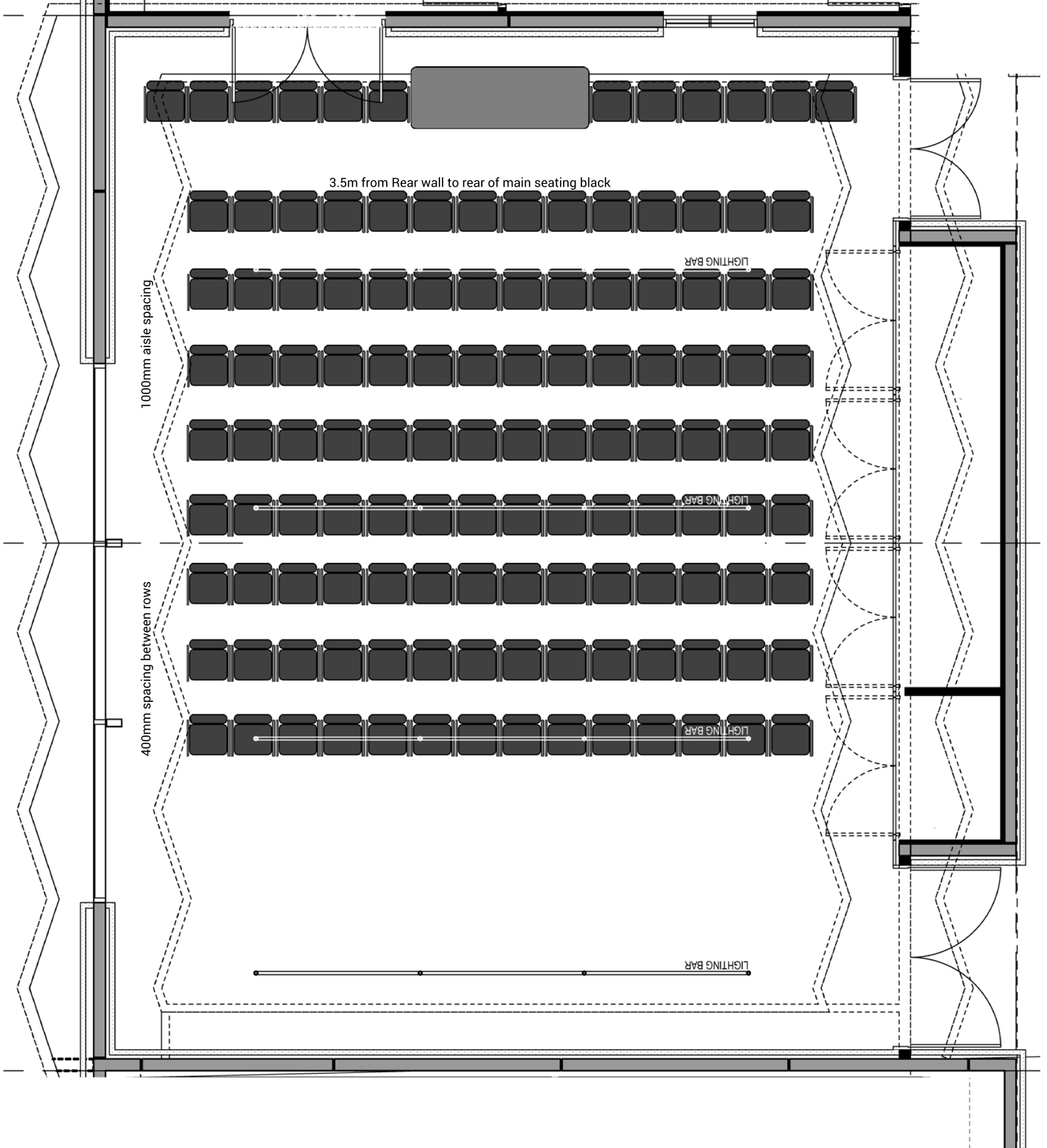


# NCMA RECITAL THEATRE End-on Seating Plan

**3.4m of performance space** 9 rows 122 seats  
 4.4m of performance space 8 rows 108 seats  
 5.4m of performance space 7 rows 94 seats

For each additional metre of performance space required,  
 a row of 14 seats must be removed.

- Stated seating capacity is sellable seats with 2 allocated to ushers
- Includes a technical operating position of 1.8m wide.
- Removing Ops increases capacity by 4.



# NCMA RECITAL THEATRE Side-on Seating Plan

3.2m of play-space	7 rows	138 seats
4.2m of play-space	6 rows	118 seats
5.2m of play-space	5 rows	98 seats

For each additional metre of performance space required, a row of 20 seats must be removed.

Stated seating capacity is sellable seats with 2 allocated to ushers. A technical operating position will remove seats.

